



Bentley Quarry

Annual Review

R&S Contracting Pty Ltd

28 October 2024



GHD Pty Ltd | ABN 39 008 488 373

230 Harbour Drive,

Coffs Harbour, New South Wales 2450, Australia

T +61 2 6650 5600 | **F** +61 2 9475 0725 | **E** cfsmail@ghd.com | **ghd.com**

Document status

Status Code	Revision	Author	Reviewer		Approved for issue		
			Name	Signature	Name	Signature	Date
S4	0	B Luffman	S Lawer		S Lawer		28/10/24

© GHD 2024

This document is and shall remain the property of GHD. The document may only be used for the purpose for which it was commissioned and in accordance with the Terms of Engagement for the commission. Unauthorised use of this document in any form whatsoever is prohibited.

Contents

1. Overview	1
1.1 Purpose and scope of this report	1
1.2 Quarry contacts	1
1.3 Limitations	2
2. Operation summary	4
3. Actions from previous Annual Review	5
4. Environmental performance	6
4.1 Noise	6
4.1.1 Environmental management	6
4.1.2 Environmental performance	6
4.1.3 Improvements and initiatives	6
4.2 Blasting	6
4.2.1 Environmental management	6
4.2.2 Environmental performance	7
4.2.3 Improvements and initiatives	8
4.3 Air quality	8
4.3.1 Environmental management	8
4.3.2 Environmental performance	8
4.3.3 Improvements and initiatives	8
4.4 Soil and water quality	8
4.4.1 Environmental management	8
4.4.2 Environmental performance	9
4.4.3 Improvements and initiatives	9
4.5 Biodiversity and rehabilitation	9
4.5.1 Environmental management	9
4.5.2 Environmental performance	9
4.5.3 Improvements and initiatives	9
4.6 Heritage	10
4.6.1 Environmental management	10
4.6.2 Environmental performance	10
4.6.3 Improvements and initiatives	10
4.7 Waste	10
4.7.1 Environmental management	10
4.7.2 Environmental performance	10
4.7.3 Improvements and initiatives	10
4.8 Traffic	11
4.8.1 Environmental management	11
4.8.2 Environmental performance	11
4.8.3 Improvements and initiatives	12
5. Community	13
6. Incidents and non-compliance	14
6.1 Incidents	14
6.2 Non-compliance	14

6.3	Regulatory agency actions	14
7.	Activities to be completed in the next reporting period	15
8.	Conclusion	16

Table index

Table 1.1	Bentley Quarry Contacts	1
Table 4.1	Bentley Quarry blast criteria	7
Table 4.2	Summary of blast monitoring	7
Table 4.3	Bentley Quarry dust monitoring results	8
Table 4.4	Truck movement summary	11

Figure index

Figure 1.1	Locality Map	3
Figure 4.1	EIS estimated ground vibration and airblast overpressure levels from blasting	7
Figure 4.2	Total number of trucks per hour	12

Appendices

Appendix A	Consultative Committee Presentation and Minutes
------------	---

1. Overview

R&S Contracting Pty Ltd own and operate the hard rock quarry known as Bentley Quarry at Lot 2 DP 1196757 – 1465 Bentley Road, Bentley in Richmond Valley Council Local Government Area (the site) (Figure 1.1). The quarry involves the extraction of hard rock with a maximum extraction rate of 300,000 tonnes per annum and a maximum daily extraction rate of 2,000 tonnes per day. The total disturbance area is approximately 6.5 hectares which includes an extraction area of approximately 3.65 hectares. The primary purpose of the project is to supply materials for use as fill and for road construction and maintenance.

This Annual Review has been prepared in response to Condition of Consent No. 102 of Development Consent No. DA2022/0107 which states:

ANNUAL REVIEW

102. Prior to the end of August each year, the Operator must prepare and submit to Council an annual review detailing the environmental performance of the development. The annual review must:
- a) describe the development that was carried out in the previous financial year, and the development that is proposed to be carried out over the current financial year;
 - b) include a comprehensive review of the monitoring results and complaints records of the development over the previous financial year, which includes a comparison of these results against:
 - i. the relevant statutory requirements, limits or performance measures/criteria;
 - ii. requirements of any plan or program required under this consent; and
 - iii. the monitoring results of previous years.
 - c) identify any non-compliance in the previous financial year, and describe what actions were (or are being) taken to ensure compliance;
 - d) identify any trends in the monitoring data over the life of the development;
 - e) identify any discrepancies between the predicted and actual impacts of the development, and analyse the potential cause of any significant discrepancies; and
 - f) describe what measures will be implemented over the current financial year to improve the environmental performance of the development.

1.1 Purpose and scope of this report

This Annual Review has been prepared to satisfy the Condition of Consent No. 102 in Development Consent DA2022/0107. The Annual Review covers the period since commencement of operations on 12 March 2024 until 30 June 2024 (herein referred to as the reporting period).

This Annual Review provides a summary of actual operational and environmental management activities undertaken at Bentley Quarry during the reporting period. The Annual Review also addresses any complaints made during the reporting period.

1.2 Quarry contacts

Table 1.1 provides contact details for key personnel who are responsible for the environmental management of Bentley Quarry.

Table 1.1 Bentley Quarry Contacts

Quarry Manager:	Rob McKenzie
Company:	R&S Contracting Pty Ltd
Address:	1465 Bentley Road, Bentley
Phone:	0428 688 860
Email:	rob@bentleyquarry.com.au

1.3 Limitations

This report has been prepared by GHD for R&S Contracting Pty Ltd and may only be used and relied on by R&S Contracting Pty Ltd for the purpose agreed between GHD and the R&S Contracting Pty Ltd.

GHD otherwise disclaims responsibility to any person other than R&S Contracting Pty Ltd arising in connection with this report. GHD also excludes implied warranties and conditions, to the extent legally permissible.

The services undertaken by GHD in connection with preparing this report were limited to those specifically detailed in the report and are subject to the scope limitations set out in the report.

The opinions, conclusions and any recommendations in this Report are based on conditions encountered and information reviewed at the date of preparation of the Report. GHD has no responsibility or obligation to update this Report to account for events or changes occurring subsequent to the date that the Report was prepared.

Where this Report is relied on or used without obtaining this further advice from GHD, to the maximum extent permitted by law, GHD disclaims all liability and responsibility to any person in connection with, arising from or in respect of this Report whether such liability arises in contract, tort (including negligence) or under statute.

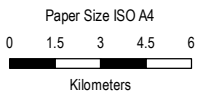
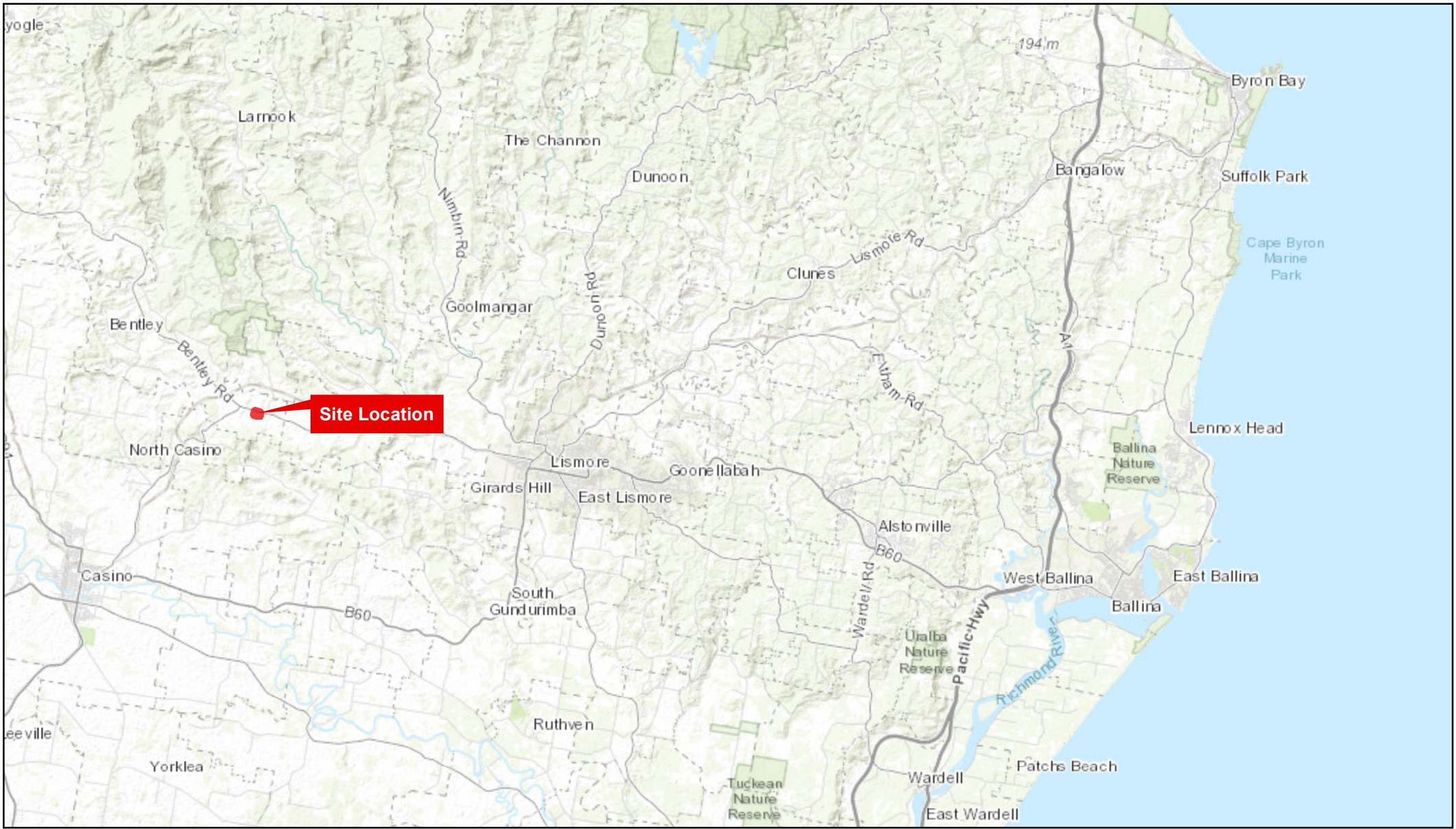
The opinions, conclusions and any recommendations in this report are based on assumptions made by GHD described in this report. GHD disclaims liability arising from any of the assumptions being incorrect.

GHD has prepared this report on the basis of information provided by R&S Contracting Pty Ltd and others who provided information to GHD (including Government authorities)], which GHD has not independently verified or checked beyond the agreed scope of work. GHD does not accept liability in connection with such unverified information, including errors and omissions in the report which were caused by errors or omissions in that information.

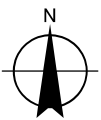
The opinions, conclusions and any recommendations in this report are based on information obtained from, and testing undertaken at or in connection with, specific sample points. Site conditions at other parts of the site may be different from the site conditions found at the specific sample points.

Investigations undertaken in respect of this report are constrained by the particular site conditions, such as the location of buildings, services, and vegetation. As a result, not all relevant site features and conditions may have been identified in this report.

Site conditions (including the presence of hazardous substances and/or site contamination) may change after the date of this Report. GHD does not accept responsibility arising from, or in connection with, any change to the site conditions. GHD is also not responsible for updating this report if the site conditions change.



Map Projection: Transverse Mercator
 Horizontal Datum: GDA 1994
 Grid: GDA 1994 MGA Zone 56



Bentley Quarry

Site Location

Project No. 12547851
 Revision No. -
 Date 14/04/2021

FIGURE 1-1

2. Operation summary

During the reporting period, the quarry commenced operations and extracted material from Stage 1 only.

In the reporting period, 18,958.91 tonnes of material was extracted.

The primary quarry operations undertaken during the reporting period included:

- Establishing the quarry and the operation processes.
- Installing the weighbridge.
- Installing equipment.
- Blast undertaken on 3 June 2024.
- Environmental monitoring, see Section 4.

3. Actions from previous Annual Review

This is the first Annual Review for Bentley Quarry so there are no actions identified in previous Annual Reviews for implementation during the current Annual Review reporting period.

4. Environmental performance

4.1 Noise

4.1.1 Environmental management

Operational noise is managed by Bentley Quarry in accordance with the approved Environmental Management Strategy (EMS). The EMS covers all operational activities with the potential to generate noise at Bentley Quarry. It details specific noise management and mitigation measures, outlines monitoring and reporting requirements and provides clear definition of the roles and responsibilities for noise management. The targets of the noise management are:

- No exceedance of the noise criteria.
- No justified complaints from adjacent residents in relation to noise generation.
- No out of hours work.

R&S Contracting proactively implements a range of noise mitigation measures for operational activities at Bentley Quarry. During the reporting period these included, but were not limited to the following:

- Ensuring machines were operated at low speed and were switched off when not being used.
- Maintaining plant and equipment to manufacturer's standards.
- Only operating within the approved hours.
- Closing all engine covers while equipment is operating.
- Avoiding dropping materials from height and avoiding metal to metal contact on material.

4.1.2 Environmental performance

Noise monitoring did not occur during the reporting period (but has since been undertaken and will be reported in the subsequent Annual Review), however R&S Contracting has not received any complaints, so it is expected the noise impacts were less than predicted which indicated the operations complied with the noise criteria.

4.1.3 Improvements and initiatives

Mitigation measures and monitoring identified in the Conditions of Consent, Environment Protection Licence 21833 (EPL) and EMS will continue to be implemented.

4.2 Blasting

4.2.1 Environmental management

Blasting operations at Bentley Quarry are managed in accordance with the EMS, which covers blasting activities associated with the quarry and appropriate mitigation measures. The targets of the blast management at Bentley Quarry are:

- No exceedance of the blasting criteria.
- No justified complaints from adjacent residents in relation to blasting and vibrations.

In order to meet these objectives, R&S Contracting proactively implements a range of mitigation measures for blasting activities at Bentley Quarry. During the reporting period these included:

- Only undertaking blasting operations between 09:00 and 15:00 Monday to Friday.
- Providing all sensitive receivers at least 24 hours' notice when blasting operations were undertaken.
- Implementing traffic control during the blast and inspecting road for rock and damage after the blast.

R&S Contracting completed blast monitoring in accordance with the Conditions of Consent and EMS.

4.2.2 Environmental performance

Project specific blast criteria outlined in EPL and Conditions of Consent are detailed in Table 4.1.

Table 4.1 Bentley Quarry blast criteria

Receiver	Airblast overpressure (dB(Lin Peak))	Ground vibration (mm/s)	Allowable exceedance
Any residence on privately-owned land	120	10	0%
	115	5	5% of the total number of blasts over a period of 12 months.

Blast monitoring was undertaken during the blast on 3 June 2024. Monitoring was undertaken at R1 and on Bungabbee Road and all were below the trigger criteria. The monitoring locations are different to those identified in the EMS but are closer to the quarry than those identified in the EMS, so considered to worse case. The one on Bungabbee Road was located in lieu of B2 because there was no agreement with the owner of the property where B2 is located. A summary of the blast monitoring is provided in Table 4.2.

Table 4.2 Summary of blast monitoring

Date	Vibration (mm/s)	Pressure (dBL)	Complies
Blast criteria	5	115	
R1	0.8	104.8	Yes
Bungabbee Road	0.18	111	Yes

The actual results in Table 4.2 are consistent with the predicted results in the EIS, presented in Figure 4.1.

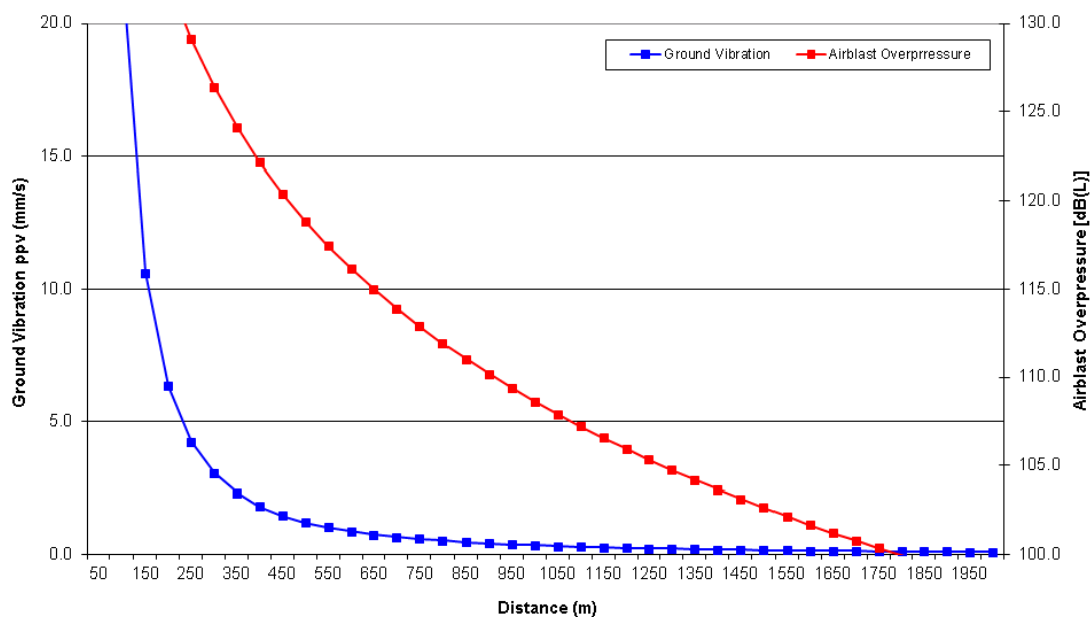


Figure 4.1 EIS estimated ground vibration and airblast overpressure levels from blasting

4.2.3 Improvements and initiatives

Given that no exceedances of the blast criteria were recorded in the reporting period, no improvements are considered necessary in relation to blasting operations but future monitoring will be undertaken at the locations identified in the EMS or suitable alternative locations if landowner approval at B2 is not forthcoming. Monitoring and mitigation measures identified in the Conditions of Consent, EPL and EMS will continue to be implemented.

4.3 Air quality

4.3.1 Environmental management

Air quality at Bentley Quarry is managed in accordance with the EMS, Conditions of Consent and EPL. The targets for air quality management are:

- Compliance with the air quality criteria.
- No visible offsite air quality impacts as a result of site operations.
- No justifiable complaints related to air quality attributable to site operations.

R&S Contracting proactively implements a range of air quality mitigation measures for operational activities at Bentley Quarry. During the reporting period these included, but were not limited to the following:

- Covering loads.
- Watering haulage routes to reduce dust.
- Using water sprays on crushers.

4.3.2 Environmental performance

Dust monitoring by Southern Cross University commenced in May 2024 at D1, D3 and D4. D2 was not monitored because there is no agreement with the owner of the property where D2 is located. The results are summarised in Table 4.3 and indicate the site complies with the relevant criteria. The results are consistent with the predictions in the EIS.

Table 4.3 Bentley Quarry dust monitoring results

Date	D1 g/m ² /month	D2 g/m ² /month	D3 g/m ² /month
Criteria	2g/m ² /month		
May	0.42	1.83	0.27
June	0.97	0.38	0.86

4.3.3 Improvements and initiatives

Monitoring and mitigation measures identified in the Conditions of Consent, EPL and EMS will continue to be implemented. Monitoring at D2 will be established or suitable alternative location if landowner approval at D2 is not forthcoming.

4.4 Soil and water quality

4.4.1 Environmental management

Soil and water quality at Bentley Quarry are managed in accordance with the EMS, which outlines appropriate mitigation measures for soil, surface water and groundwater management.

The targets for soil and water management at Bentley Quarry are:

- Manage erosion associated with operational activities, in accordance with *Managing Urban Stormwater Soil and Construction – Volume 2e Mines and Quarries* (DECC,2008).
- No exceedances of the EPL discharge limits.

In order to meet these targets, R&S Contracting implements a range of mitigation measures and monitoring requirements as outlined in the EMS, which include:

- Daily weather monitoring.
- Daily rainfall monitoring.
- Weekly monitoring of erosion and sediment controls, and following rain.
- Dirty water and clean water bunds/drains.
- Stabilising/revegetating disturbed areas as soon as possible.
- Spill kit checks monthly and following use.
- Groundwater monitoring.

4.4.2 Environmental performance

All water has been managed on site, with no offsite discharges within the reporting period, so monitoring data is not available. Groundwater was not intercepted during the reporting period.

4.4.3 Improvements and initiatives

R&S Contracting will continue to implement the appropriate mitigation measures and monitoring required by the Conditions of Consent, EPL and EMS.

4.5 Biodiversity and rehabilitation

4.5.1 Environmental management

Biodiversity and rehabilitation at Bentley Quarry is managed in accordance with the EMS and Conditions of Consent. The targets outlined in the EMS in relation to biodiversity and rehabilitation include:

- No fauna fatalities.
- No unapproved disturbance of vegetation.
- No new occurrences of weeds on site.

In order to meet these objectives, R&S Contracting implements a range of mitigation measures and monitoring requirements as outlined in the EMS, which include:

- Clearly marked the limits of clearing.
- Managing weeds
- Using native species for revegetation.

4.5.2 Environmental performance

During the reporting period there have been no reported fauna fatalities, unapproved disturbance of vegetation or any new weeds on site.

4.5.3 Improvements and initiatives

R&S Contracting will continue to implement the EMS and Conditions of Consent requirements to minimise impacts on biodiversity. They will also commence the compensatory planting of the offset site.

4.6 Heritage

4.6.1 Environmental management

Management of both historical and Aboriginal cultural heritage at Bentley Quarry is in accordance with the EMS and Conditions of Consent. The targets outlined in the EMS in relation to heritage are:

- No damage to heritage items.
- All site staff and contractors trained on unexpected finds protocol.

4.6.2 Environmental performance

During the reporting period, R&S Contracting has followed the protocols outlined in the EMS. As predicted in the EIS, no unexpected finds of historical or Aboriginal heritage items have been recorded during the reporting period.

4.6.3 Improvements and initiatives

The EMS and Conditions of Consent will continue to be implemented at Bentley Quarry over the next reporting period.

4.7 Waste

4.7.1 Environmental management

Waste at Bentley Quarry is managed in accordance with the EMS, Conditions of Consent and EPL. The targets outlined in the EMS in relation to waste are:

- The volume of waste disposed at landfill is less than 1% of the volume extracted.
- No recyclable products disposed to landfill.
- No contamination of the quarry.

The EMS encouraged using the waste management hierarchy of avoid, reuse/recycle, and then dispose to mitigate the impacts of waste from a number of sources, including excavated material, green waste, general construction waste, contaminated soil, liquid waste, wastewater, biological waste, and domestic waste.

The following mitigation measures were implemented by R&S Contracting during the reporting period to manage waste on-site:

- Re-using excess materials.
- Recycling metal, waste oil and old batteries.
- Appropriate storage of chemicals and fuels in bunded areas with 110% capacity.
- Diverting clean water from the site.
- Routine weekly inspection to ensure the site is clean and tidy.

4.7.2 Environmental performance

No waste was generated during the reporting period but approximately 108 tonnes of waste concrete was imported to site. The waste concrete will be processed and reused to blend with other products from the quarry.

4.7.3 Improvements and initiatives

R&S Contracting will continue to implement the waste mitigation measures and conditions outlined in the EMS, Conditions of Consent and EPL.

4.8 Traffic

4.8.1 Environmental management

Traffic at Bentley Quarry is managed in accordance with the EMS and Conditions of Consent. The targets of the EMS in relation to traffic are:

- Ensure full compliance with the relevant legislative requirements and CoA.
- No justified complaints related to site traffic.
- No road damage from quarry vehicle movements beyond normal wear and tear.

In order to meet these objectives R&S Contracting implemented the following mitigation measures during the reporting period:

- Implementation of the driver’s code of conduct.
- No more than 70 laden trucks dispatched from the quarry on any day and no more than 7 in an hour.
- Restricted trucks leaving the site between 8 – 9 am and 3 – 4 pm each day.

4.8.2 Environmental performance

A summary of the truck movements during the reporting period is provided in Table 4.4 (truck numbers prior to 30 May 2024 are not available). This shows the maximum number of trucks was less than the limit and ranged between 0 and 69. Most days are well below the maximum limit, so the impacts from traffic associated with the quarry are likely to be a lot less than predicted in the EIS.

Some trucks have entered the site during the restricted hours of between 8 – 9 am and 3 – 4 pm each day. However, Bentley Quarry does not allow any trucks to leave site during the restricted times. Bentley Quarry report that it is difficult to control trucks entering the site for a full hour and once they arrive it’s considered safer to have them enter, rather than park on the side of the road, potentially causing a hazard for other motorists.

Nevertheless, Bentley Quarry will continue to apply the Driver’s Code of Conduct to limit the trucks entering the site. As shown by Figure 4.2, this has been effective with significantly less trucks during these periods, considering Figure 4.2 shows trucks during school holiday periods, when the restrictions do not apply.

Table 4.4 Truck movement summary

Day	May	Jun
1	0	0
2	0	0
3	0	13
4	0	2
5	0	7
6	0	0
7	0	36
8	0	0
9	0	0
10	0	0
11	0	54
12	0	64
13	0	34
14	0	4
15	0	18

Day	May	Jun
16	0	0
17	0	19
18	0	25
19	0	69
20	0	0
21	0	0
22	0	0
23	0	0
24	0	17
25	0	14
26	0	12
27	0	11
28	0	9
29	0	0
30	13	0
31	38	-

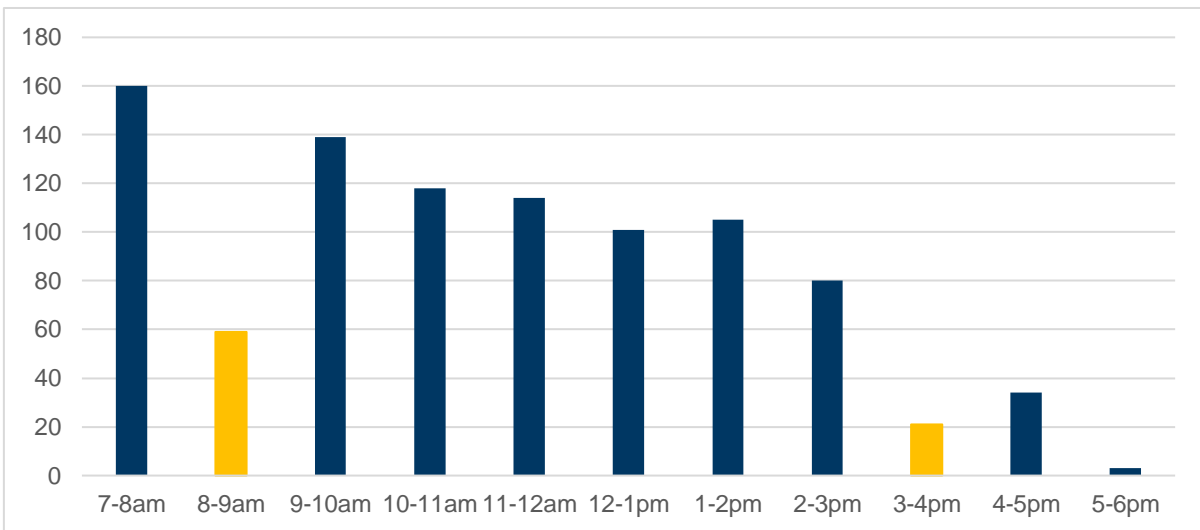


Figure 4.2 Total number of trucks per hour

4.8.3 Improvements and initiatives

R&S Contracting will continue to implement the traffic mitigation measures and conditions outlined in the EMS and Conditions of Consent. It is also proposed to modify or remove the restricted hours, so it's more practical.

5. Community

In accordance with Condition No. 107, a Community Consultative Advisory Committee was established and held the first meeting on 26 June 2024. This provided the community and Council an opportunity to inform R&S Contracting of any issues and for R&S Contracting to provide an update on the quarry operations and monitoring. A copy of the presentation provided at the meeting and the minutes are provided in Appendix A.

The EMS included details of a complaints handling process for the quarry. In accordance with the EMS, a complaints telephone line was established, with the number advertised on the Bentley Quarry entrance and on the Bentley Quarry website. The EMS requires all records of complaints to include:

- The date and time of the complaint.
- The method by which the complaint was made.
- Any personal details of the complainant or, if no such details were provided, a note to that effect.
- The nature of the complaint.
- The action taken in relation to the complaint, including any follow-up contact with the complainant.
- If no action was taken, the reason why no action was taken.

Bentley Quarry records all complaints regarding quarry operations, in accordance with the EMS. The complaints will be publicly available on their website. To date no complaints have been received.

6. Incidents and non-compliance

6.1 Incidents

No incidents were recorded during the reporting period.

6.2 Non-compliance

No non-compliances with the performance measures/criteria were identified in the monitoring data for the reporting period. The exception is the trucks entering the site during the restricted hours and the missing truck records, as detailed in Section 4.8.

6.3 Regulatory agency actions

There has been no regulatory agency action during the reporting period.

7. Activities to be completed in the next reporting period

In the next 12 months, activities at the quarry are anticipated to include:

- Continued extraction with an estimated extraction volume of 100,000 tonnes.
- Commencement of rehabilitation of the offset area.
- Independent environmental audit.
- Modify the hours trucks are restricted operate.
- General operations and monitoring in accordance with the EMS, Conditions of Consent and EPL.

8. Conclusion

This Annual Review has been completed for Bentley Quarry, on behalf of R&S Contracting, in accordance with DA2022/0107 Condition of Consent No. 102, to assess environmental compliance at the site from 12 March 2024 to 30 June 2024, the reporting period.

The primary quarry operations undertaken during the reporting period included:

- Extraction of 18,958.91 tonnes
- Establishment of the quarry and the processes
- Installation of the weighbridge
- Installation of equipment
- A single blast
- Environmental monitoring

Activities proposed for the next reporting period include:

- Continue extraction with an estimated extraction volume of 100,000 tonnes.
- Commencement of rehabilitation of the offset area.
- Independent environmental audit.
- Modify the hours trucks are restricted operate.
- General operations and monitoring.

An assessment of the environmental monitoring completed at Bentley Quarry was undertaken, with compliance against EMS, Conditions of Consent and EPL. Generally, environmental management at Bentley Quarry, during the reporting period, was as predicted and compliant.

No complaints were received during the reporting period.

Environmental management will continue to comply with the EMS, Conditions of Consent and EPL.

Appendices

Appendix A

**Consultative Committee Presentation
and Minutes**



Bentley Quarry Community Consultative Group Update 1



05/05
Developing
Our
People & Culture



Overview

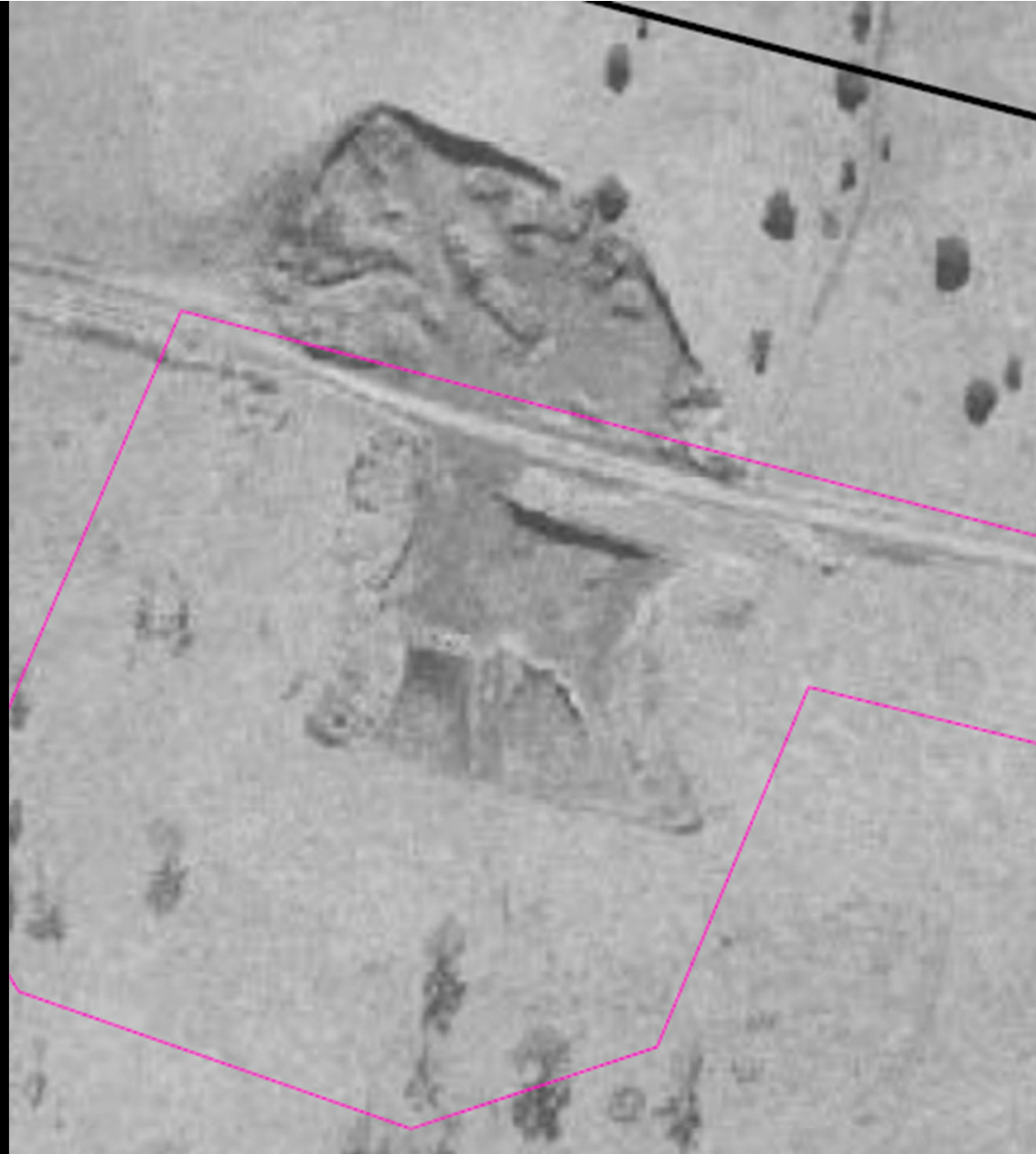
- History
- Recent activities
- Monitoring
- Modification





History

- The site has been used as a quarry since about the 1960's
- Up to 6,000 tonnes/yr have been extracted over the past couple of years under existing use rights
- DA lodged to expand the area of the quarry and volume to 300,000 tonnes/yr
- DA approved 16 December 2022





Recent activities

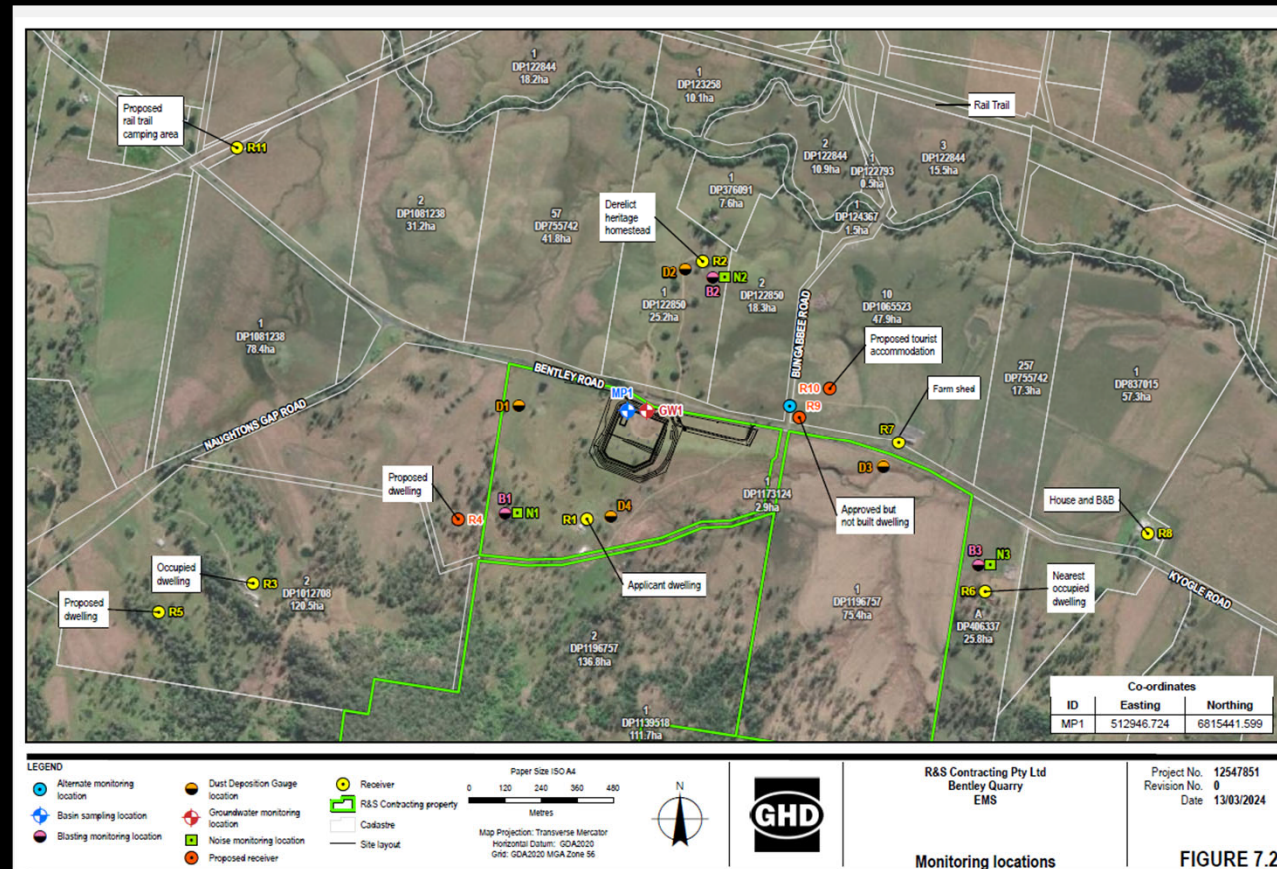
- Prepared environmental management plans
- Upgraded the Bentley Road intersection
- Obtained EPL
- Commenced operations on 19 March 2024
- Blast on 3 June 2024





Monitoring

- Trucks 25 to 30 per day
- Volume about 300 tonnes/day
- Dust under criteria
- Noise monitoring scheduled for next month
- No water monitoring to date
- Blast monitoring not available

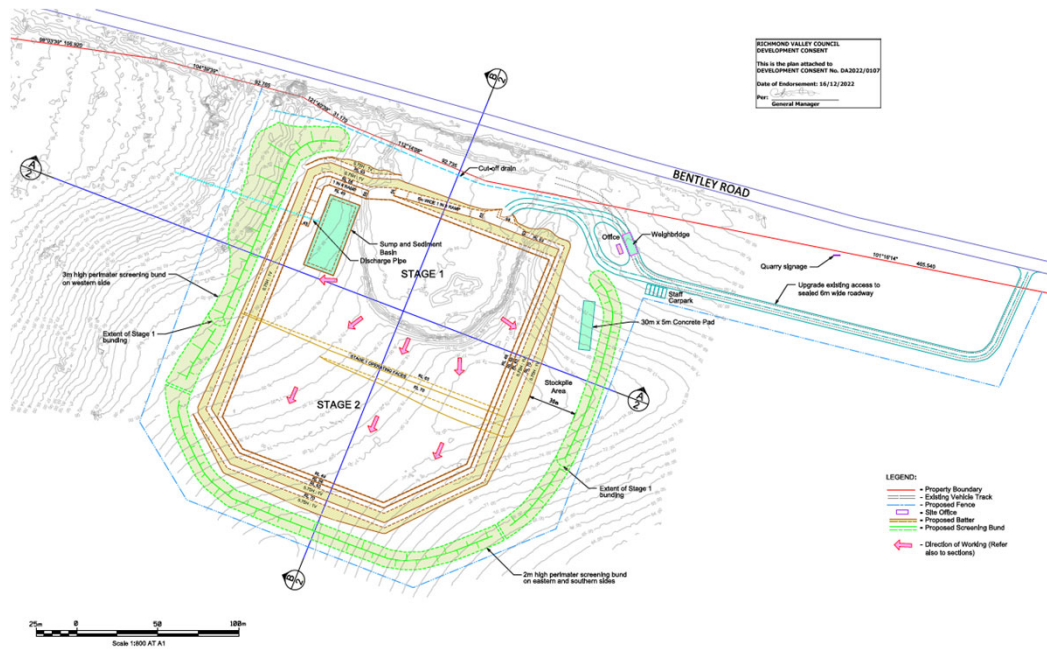




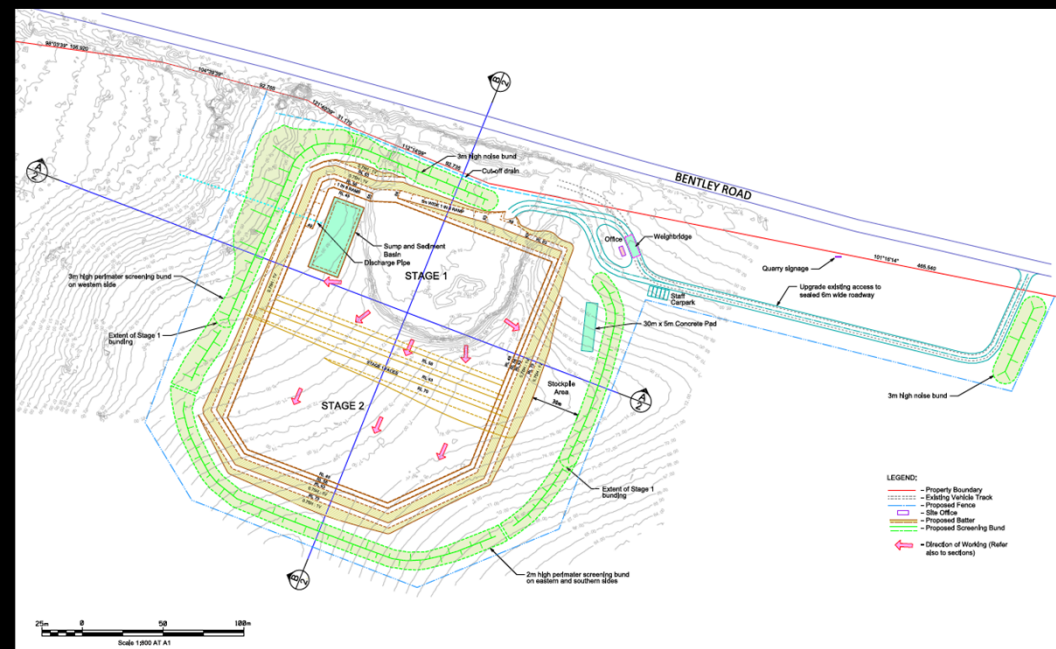
Modification

Modification	Reason
Remove limit on truck movements during school bus hours	<ul style="list-style-type: none">• School buses don't run on the road for 1 hour• It is unfair and unreasonable• Trucks follow road rules and have a requirement to slow when passing school children
Modified stages from 4 stages to 2 stages	<ul style="list-style-type: none">• Simplifies the extraction• Gets access to better material earlier• Reduces noise and dust impacts

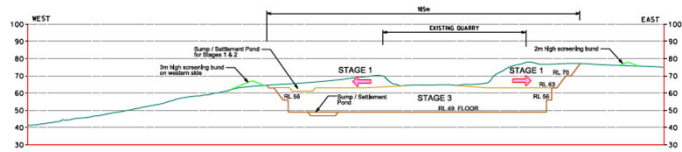
Approved plan



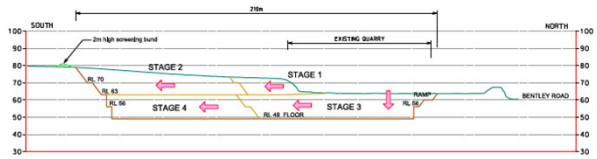
Modification plan



Approved sections



SECTION A - A

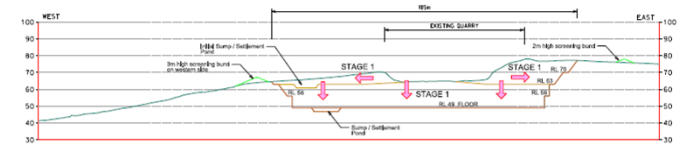


SECTION B - B

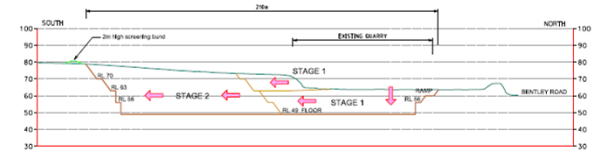
RICHMOND VALLEY COUNCIL
 DEVELOPMENT CONSENT
 This is the plan attached to
 DEVELOPMENT CONSENT No. DA3822/0107
 Date of Endorsement: 14/12/2023
 Per: _____
 General Manager



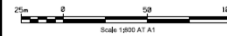
Modification sections



SECTION A - A



SECTION B - B





Questions

Community Consultative Advisory Group Meeting

Community Consultative Advisory Group Meeting (Bentley Quarry)

Held on: 26/06/2024 – 5pm to 6pm

At: Casino Gold Club, 147 West St, Casino NSW 2470

Chaired by: Luke Meadows

Attended

Angela Jones (Richmond Valley Council), Katrina Bloomfield (Community representative), Rob Mckenzie (R & S Contracting – Quarry owner), Ben Luffman (GHD), Luke Meadows (ENV Solutions)

Apologies

-

Declarations of interest

No pecuniary or non-pecuniary interest were indicated

Agenda

Agenda
Welcome to country
Declarations of Interest
Introductions of meeting members
Role of the community
Summary of activities and monitoring at the quarry
Community issues
Close out
Next meeting

Community Consultative Advisory Group Meeting

Meeting Minuets

Welcome to country:

Luke Meadows acknowledges the Bundjalung people of the local Casino area.

Declarations of Interest:

Katrina Bloomfield (Community representative) signs wavier indicating no pecuniary or non-pecuniary interest in the quarry.

Introductions of meeting members:

Angela Jones Richmond Valley Council, Director of community service delivery: Angella coordinates a group of operational staff. Manages events, tourism, engagement, communications, customer experience, environmental health, Libraries and IT.

Katrina Bloomfield: Katrina is acting on behalf of the community group. Katrina lives and works in the local area.

Rob Mckenzie: Rob is the owner of the quarry and operates the quarry under R & S Contracting. Rob also resides on the land the quarry operates on.

Ben Luffman: Ben of GHD acting on behalf of R & S contracting responsible for managing the environmental approvals for the quarry.

Luke Meadows: Luke is an environmental consultant and occupational hygienist working for ENV Solutions in Ballina. Luke is acting as the independent chair for this community advisor meeting.

Role of the community:

Katrina Bloomfield is acting on behalf of the community. Katrina lives in the local area and is favour of the quarry operations currently. Katrina indicates she actively discusses the quarry with other community members in day-to-day life and the general consensus is that most people are in favour of current operations at the quarry, with a small number of people unhappy.

Summary of activities and monitoring at the quarry:

Ben Luffman (GHD) gives a presentation via Microsoft power point outlining the following:

- History of quarry on site since 1960s
- Recent activities:
 - DA lodged to increase quarry size to 300,000 tons/year and footprint, approved December 2022
 - Preparation of environmental management plans and actions for operation
 - Upgrade of quarry intersection for safety
 - Obtained EPL from EPA
 - Commenced operations 19th March
 - Blast held 3rd June (small blast, close to road, no issues reported, drone used to check for damage/debris on road post-blast)
- Monitoring:

Community Consultative Advisory Group Meeting

- Dust monitoring at 2 of 3 planned locations (results within criteria), 3rd location pending sale of nearby property

- Noise monitoring scheduled for next month once full operations in place

- No water monitoring required as no off-site discharge

- Dilapidation surveys completed on 2 nearby structures (John's shed and heritage listed house)

- Modification application:

- Removal of truck movement restrictions during school bus periods (safety concerns with trucks waiting, consistency with other quarries)

Weighbridge being set up to monitor truck movements (currently 20-30 trucks/day, 7 trucks/hour, 300 tons/day extraction)

- Change to extraction sequence (4 stages to single stage, pit to full depth then expansion, noise/dust benefits from pit depth)

- Key points raised:

- Preference for single quarry location rather than multiple quarries on individual properties

- Query on impacts if extraction reaches approved 300,000 ton limit

- Council to investigate complaints and take action if any breaches of approval conditions

- Additional notes or comments:

- Some attendees have set views on the quarry

- Further process to go through before final decision on modification.

Community Issues:

Katrina Bloomfield indicates from her perspective most people are generally happy with the quarry, however is a small group of people who are disgruntled.

A few members concerned with additional trucks being on the road during school drop off and pick up times.

Rob McKenzie (R & S Contracting – Quarry owner) indicates that he thinks it would be more unsafe having 10 or more trucks waiting to leave the quarry at 9am and potentially causing move traffic along the road as apposed to the trucks leaving independently across the 8-9am period.

Questions was asked to Angela Jones (Richmond Valley Council) are the council receiving compliants about the quarry and what is the frequency of complaints in comparison top other quarries in the local area?

Angela Jones indicates complaints similar to other quarries in the local area, with some “Nasty” emails being received.

Angela indicates if a genuine complaint is made, the council would go and fact check it. If there was a breach somewhere, they would be a formal process, site inspection and conversations and take appropriate action taken, whatever it might be at the time. But if the currently operations are in accordance with what's been approved no action will be taken.

Community Consultative Advisory Group Meeting

Close out:

Meeting finishes at approximately 17:50.

All attendees discuss next meeting date and location.

Rob Mckenzie (R & S Contracting – Quarry owner) suggests hosting the next meeting at the quarry as to give the community a better understanding of the operations at the quarry.

All attendees agree that this is a good option.

All attendees agree next meeting late November to early December this year.

Upcoming meetings

Late November / Early December 204



ghd.com

➔ **The Power of Commitment**