



Bentley Quarry

Annual Review

R&S Contracting Pty Ltd

23 March 2026

GHD Pty Ltd | ABN 39 008 488 373

230 Harbour Drive,

Coffs Harbour, New South Wales 2450, Australia

T +61 2 6650 5600 | **F** +61 2 9475 0725 | **E** cfsmail@ghd.com | **ghd.com**

Document status

| Status Code | Revision | Author | Reviewer | | Approved for issue | | |
|-------------|----------|----------|-----------|------------|--------------------|--------------------|----------|
| | | | Name | Signature | Name | Signature | Date |
| S4 | 0 | B Slater | B Luffman | <i>Ben</i> | D Mees | <i>[Signature]</i> | 23/03/26 |
| | | | | | | | |
| | | | | | | | |
| | | | | | | | |
| | | | | | | | |

© GHD 2026

This document is and shall remain the property of GHD. The document may only be used for the purpose for which it was commissioned and in accordance with the Terms of Engagement for the commission. Unauthorised use of this document in any form whatsoever is prohibited.

Contents

| | |
|---|-----------|
| 1. Overview | 1 |
| 1.1 Purpose and scope of this report | 1 |
| 1.2 Quarry contacts | 1 |
| 1.3 Limitations | 2 |
| 2. Operation summary | 4 |
| 3. Actions from previous Annual Review | 5 |
| 4. Environmental performance | 6 |
| 4.1 Noise | 6 |
| 4.1.1 Environmental management | 6 |
| 4.1.2 Environmental performance | 6 |
| 4.1.3 Improvements and initiatives | 6 |
| 4.2 Blasting | 6 |
| 4.2.1 Environmental management | 6 |
| 4.2.2 Environmental performance | 7 |
| 4.2.3 Improvements and initiatives | 8 |
| 4.3 Air quality | 8 |
| 4.3.1 Environmental management | 8 |
| 4.3.2 Environmental performance | 8 |
| 4.3.3 Improvements and initiatives | 8 |
| 4.4 Soil and water quality | 9 |
| 4.4.1 Environmental management | 9 |
| 4.4.2 Environmental performance | 9 |
| 4.4.3 Improvements and initiatives | 10 |
| 4.5 Biodiversity and rehabilitation | 10 |
| 4.5.1 Environmental management | 10 |
| 4.5.2 Environmental performance | 10 |
| 4.5.3 Improvements and initiatives | 10 |
| 4.6 Heritage | 10 |
| 4.6.1 Environmental management | 10 |
| 4.6.2 Environmental performance | 11 |
| 4.6.3 Improvements and initiatives | 11 |
| 4.7 Waste | 11 |
| 4.7.1 Environmental management | 11 |
| 4.7.2 Environmental performance | 11 |
| 4.7.3 Improvements and initiatives | 11 |
| 4.8 Traffic | 11 |
| 4.8.1 Environmental management | 11 |
| 4.8.2 Environmental performance | 12 |
| 4.8.3 Improvements and initiatives | 12 |
| 5. Community | 13 |
| 6. Incidents and non-compliance | 14 |
| 6.1 Incidents | 14 |
| 6.2 Non-compliance | 14 |

| | | |
|-----------|--|-----------|
| 6.3 | Regulatory agency actions | 14 |
| 7. | Activities to be completed in the next reporting period | 15 |
| 8. | Conclusion | 16 |

Table index

| | | |
|-----------|---|---|
| Table 1.1 | Bentley Quarry Contacts | 1 |
| Table 3.1 | Status of actions from previous Annual Review | 5 |
| Table 4.1 | Bentley Quarry blast criteria | 7 |
| Table 4.2 | Summary of blast monitoring | 7 |
| Table 4.3 | Bentley Quarry dust monitoring results | 8 |
| Table 4.4 | Basin water quality | 9 |
| Table 4.5 | GW1 monitoring results | 9 |

Figure index

| | | |
|------------|---|---|
| Figure 1.1 | Locality Map | 3 |
| Figure 4.1 | EIS estimated ground vibration and airblast overpressure levels from blasting | 7 |

Appendices

| | |
|------------|---|
| Appendix A | Consultative Committee Presentation and Minutes |
| Appendix B | Complaints |

1. Overview

R&S Contracting Pty Ltd own and operate the hard rock quarry known as Bentley Quarry at Lot 2 DP 1196757 – 1465 Bentley Road, Bentley in Richmond Valley Council Local Government Area (the site) (Figure 1.1). The quarry involves the extraction of hard rock with a maximum extraction rate of 300,000 tonnes per annum and a maximum daily extraction rate of 2,000 tonnes per day. The total disturbance area is approximately 6.5 hectares which includes an extraction area of approximately 3.65 hectares. The primary purpose of the project is to supply materials for use as fill and for road construction and maintenance.

This Annual Review has been prepared in response to Condition of Consent No. 102 of Development Consent No. DA2022/0107 which states:

ANNUAL REVIEW

102. Prior to the end of August each year, the Operator must prepare and submit to Council an annual review detailing the environmental performance of the development. The annual review must:
- a) describe the development that was carried out in the previous financial year, and the development that is proposed to be carried out over the current financial year;
 - b) include a comprehensive review of the monitoring results and complaints records of the development over the previous financial year, which includes a comparison of these results against:
 - i. the relevant statutory requirements, limits or performance measures/criteria;
 - ii. requirements of any plan or program required under this consent; and
 - iii. the monitoring results of previous years.
 - c) identify any non-compliance in the previous financial year, and describe what actions were (or are being) taken to ensure compliance;
 - d) identify any trends in the monitoring data over the life of the development;
 - e) identify any discrepancies between the predicted and actual impacts of the development, and analyse the potential cause of any significant discrepancies; and
 - f) describe what measures will be implemented over the current financial year to improve the environmental performance of the development.

1.1 Purpose and scope of this report

This Annual Review has been prepared to satisfy the Condition of Consent No. 102 in Development Consent DA2022/0107. The Annual Review covers the 2024/25 financial year, i.e., 1 July 2024 until 30 June 2025 (herein referred to as the reporting period).

This Annual Review provides a summary of actual operational and environmental management activities undertaken at Bentley Quarry during the reporting period. The Annual Review also addresses any complaints made during the reporting period.

1.2 Quarry contacts

Table 1.1 provides contact details for key personnel who are responsible for the environmental management of Bentley Quarry.

Table 1.1 Bentley Quarry Contacts

| | |
|------------------------|----------------------------|
| Quarry Manager: | Rob McKenzie |
| Company: | R&S Contracting Pty Ltd |
| Address: | 1465 Bentley Road, Bentley |
| Phone: | 0428 688 860 |
| Email: | rob@bentleyquarry.com.au |

1.3 Limitations

This report has been prepared by GHD for R&S Contracting Pty Ltd and may only be used and relied on by R&S Contracting Pty Ltd for the purpose agreed between GHD and the R&S Contracting Pty Ltd.

GHD otherwise disclaims responsibility to any person other than R&S Contracting Pty Ltd arising in connection with this report. GHD also excludes implied warranties and conditions, to the extent legally permissible.

The services undertaken by GHD in connection with preparing this report were limited to those specifically detailed in the report and are subject to the scope limitations set out in the report.

The opinions, conclusions and any recommendations in this Report are based on conditions encountered and information reviewed at the date of preparation of the Report. GHD has no responsibility or obligation to update this Report to account for events or changes occurring subsequent to the date that the Report was prepared.

Where this Report is relied on or used without obtaining this further advice from GHD, to the maximum extent permitted by law, GHD disclaims all liability and responsibility to any person in connection with, arising from or in respect of this Report whether such liability arises in contract, tort (including negligence) or under statute.

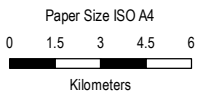
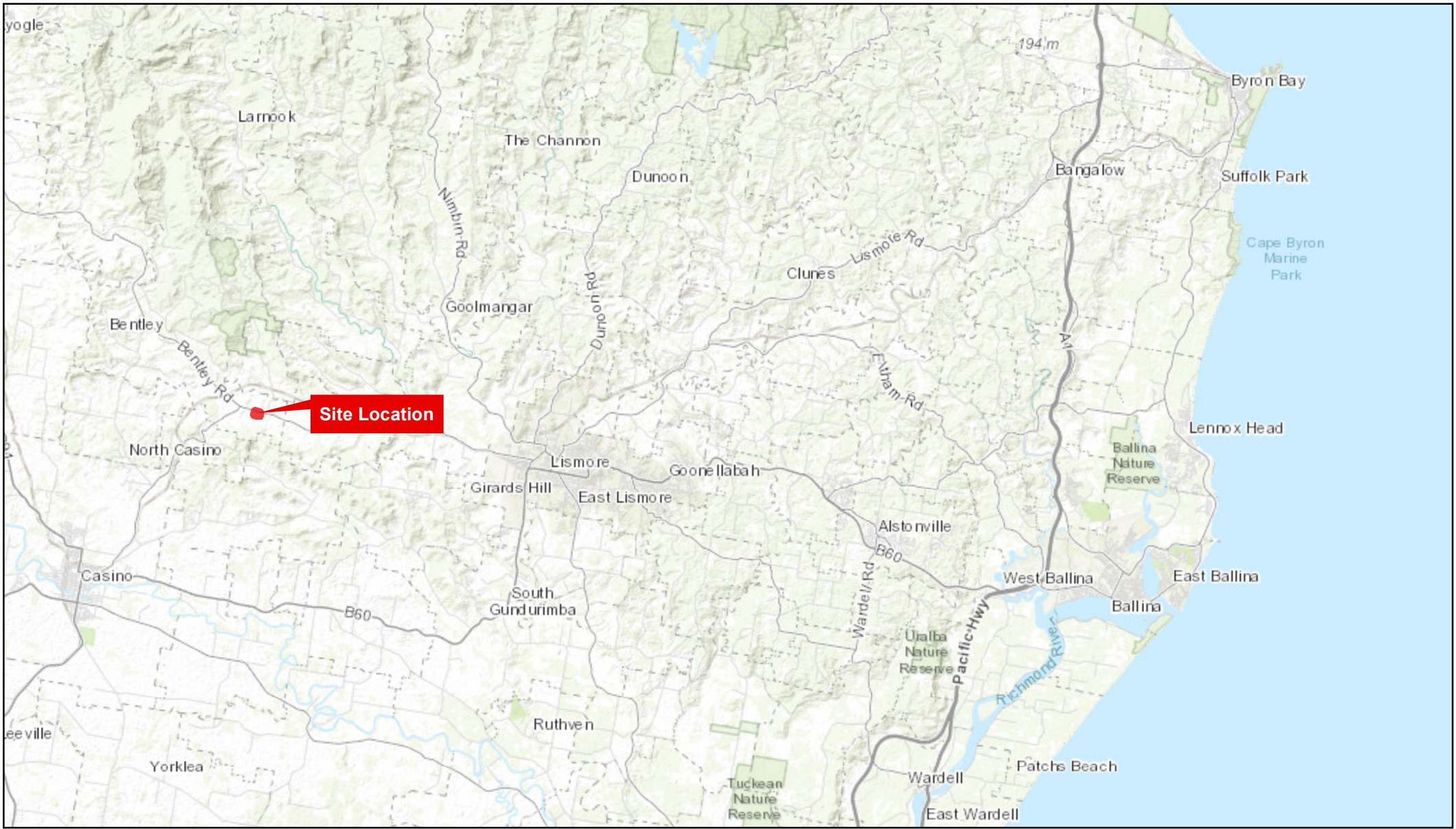
The opinions, conclusions and any recommendations in this report are based on assumptions made by GHD described in this report. GHD disclaims liability arising from any of the assumptions being incorrect.

GHD has prepared this report on the basis of information provided by R&S Contracting Pty Ltd and others who provided information to GHD (including Government authorities)], which GHD has not independently verified or checked beyond the agreed scope of work. GHD does not accept liability in connection with such unverified information, including errors and omissions in the report which were caused by errors or omissions in that information.

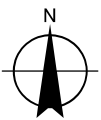
The opinions, conclusions and any recommendations in this report are based on information obtained from, and testing undertaken at or in connection with, specific sample points. Site conditions at other parts of the site may be different from the site conditions found at the specific sample points.

Investigations undertaken in respect of this report are constrained by the particular site conditions, such as the location of buildings, services, and vegetation. As a result, not all relevant site features and conditions may have been identified in this report.

Site conditions (including the presence of hazardous substances and/or site contamination) may change after the date of this Report. GHD does not accept responsibility arising from, or in connection with, any change to the site conditions. GHD is also not responsible for updating this report if the site conditions change.



Map Projection: Transverse Mercator
 Horizontal Datum: GDA 1994
 Grid: GDA 1994 MGA Zone 56



Bentley Quarry

Site Location

Project No. 12547851
 Revision No. -
 Date 14/04/2021

FIGURE 1-1

2. Operation summary

During the reporting period, the quarry extracted 89,702 tonnes of material.

The primary quarry operations undertaken during the reporting period included:

- Holding Community Consultative Advisory Committee meetings on:
 - 13 November 2024
 - 19 June 2025
- Blast undertaken February 2025.
- Environmental management, see Section 4.
- Noise compliance monitoring.
- Obtained consent for a modification to the staging from 4 stages to 2 on the 21 November 2024.

3. Actions from previous Annual Review

The actions identified during the previous Annual Review for implementation during the current Annual Review reporting period are presented in Table 3.1, along with the current status.

Table 3.1 Status of actions from previous Annual Review

| Action predicted in previous Annual Review | Action taken by the Operator | Reference |
|---|--|------------------|
| Continued extraction with an estimated extraction volume of 100,000 tonnes | A total of 89,702 tonnes of material was extracted. | Section 2 |
| Commencement of rehabilitation of the offset area | Rehabilitation of offset area has not commenced. It is planned to commence early 2026. | Section 4.5 |
| Independent environmental audit | The Independent Environmental Audit was commenced. | Section 6.2 |
| General operations and monitoring in accordance with the EMS, Conditions of Consent and EPL | The operations have generally been managed in accordance with the EMS, Conditions of Consent and EPL | Section 4 |

4. Environmental performance

4.1 Noise

4.1.1 Environmental management

Operational noise is managed by Bentley Quarry in accordance with the approved Environmental Management Strategy (EMS). The EMS covers all operational activities with the potential to generate noise at Bentley Quarry. It details specific noise management and mitigation measures, outlines monitoring and reporting requirements and provides clear definition of the roles and responsibilities for noise management. The targets of the noise management are:

- No exceedance of the noise criteria.
- No justified complaints from adjacent residents in relation to noise generation.
- No out of hours work.

R&S Contracting proactively implements a range of noise mitigation measures for operational activities at Bentley Quarry. During the reporting period these included, but were not limited to the following:

- Ensuring machines were operated at low speed and were switched off when not being used.
- Maintaining plant and equipment to manufacturer's standards.
- Only operating within the approved hours.
- Closing all engine covers while equipment is operating.
- Avoiding dropping materials from height and avoiding metal to metal contact on material.

4.1.2 Environmental performance

Operational noise compliance survey and assessment of Bentley Quarry was undertaken on Wednesday 31 July 2024. The noise assessment consisted of attended monitoring to quantify operational noise levels at four (4) nominated locations near the site for the day time period.

The results of the attended monitoring indicate that under the meteorological conditions at the time of monitoring:

- No modification factors for annoying characteristics (Noise Policy for Industry (2017)) were applicable.
- Bentley Quarry complied with the respective day period operational noise criteria at all assessment monitoring locations.
- There were no site associated truck movements at the time of conducting truck pass by measurements. Observations during compliance monitoring at the four (4) measurement locations, suggest that the site's truck movements will be within the Road Noise Policy criteria.

4.1.3 Improvements and initiatives

Mitigation measures and monitoring identified in the Conditions of Consent, Environment Protection Licence 21833 (EPL) and EMS will continue to be implemented.

4.2 Blasting

4.2.1 Environmental management

Blasting operations at Bentley Quarry are managed in accordance with the EMS, which covers blasting activities associated with the quarry and appropriate mitigation measures. The targets of the blast management at Bentley Quarry are:

- No exceedance of the blasting criteria.
- No justified complaints from adjacent residents in relation to blasting and vibrations.

In order to meet these objectives, R&S Contracting proactively implements a range of mitigation measures for blasting activities at Bentley Quarry. During the reporting period these included:

- Only undertaking blasting operations between 09:00 and 15:00 Monday to Friday.
- Providing all sensitive receivers at least 24 hours' notice when blasting operations were undertaken.
- Implementing traffic control during the blast and inspecting road for rock and damage after the blast.

R&S Contracting completed blast monitoring in accordance with the Conditions of Consent and EMS.

4.2.2 Environmental performance

Project specific blast criteria outlined in EPL and Conditions of Consent are detailed in Table 4.1.

Table 4.1 Bentley Quarry blast criteria

| Receiver | Airblast overpressure (dB(Lin Peak)) | Ground vibration (mm/s) | Allowable exceedance |
|---------------------------------------|--------------------------------------|-------------------------|---|
| Any residence on privately-owned land | 120 | 10 | 0% |
| | 115 | 5 | 5% of the total number of blasts over a period of 12 months |

Blast monitoring was undertaken at R1 during the blast and all results were below the trigger criteria. The monitoring locations are different to those identified in the EMS but are closer to the quarry than those identified in the EMS, so considered to be worse case. A summary of the blast monitoring is provided in Table 4.2.

Table 4.2 Summary of blast monitoring

| Date | Vibration (mm/s) | Pressure (dBL) | Complies |
|-----------------------|------------------|----------------|----------|
| Blast criteria | 5 | 115 | |
| 15/02/2025 | 0.38 | 97.8 | Yes |

The actual results in Table 4.2 are consistent with the predicted results in the EIS, presented in Figure 4.1.

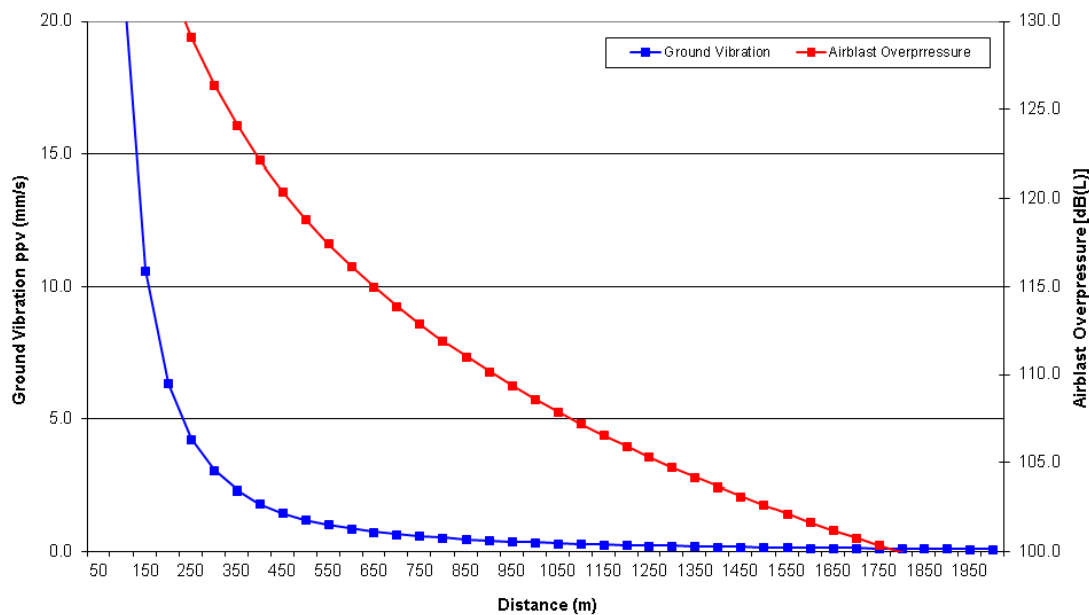


Figure 4.1 EIS estimated ground vibration and airblast overpressure levels from blasting

4.2.3 Improvements and initiatives

Given that no exceedances of the blast criteria were recorded in the reporting period, no improvements are considered necessary in relation to blasting operations but future monitoring will be undertaken at the locations identified in the EMS or suitable alternative locations if landowner approval at B2 is not forthcoming. Monitoring and mitigation measures identified in the Conditions of Consent, EPL and EMS will continue to be implemented.

4.3 Air quality

4.3.1 Environmental management

Air quality at Bentley Quarry is managed in accordance with the EMS, Conditions of Consent and EPL. The targets for air quality management are:

- Compliance with the air quality criteria.
- No visible offsite air quality impacts as a result of site operations.
- No justifiable complaints related to air quality attributable to site operations.

R&S Contracting proactively implements a range of air quality mitigation measures for operational activities at Bentley Quarry. During the reporting period these included, but were not limited to the following:

- Covering loads.
- Watering haulage routes to reduce dust.
- Using water sprays on crushers.

4.3.2 Environmental performance

Dust monitoring by Southern Cross University was conducted on eight occasions during the reporting period at D1, D3 and D4. D2 was not monitored because there is no agreement with the owner of the property where D2 is located. The results are summarised in Table 4.3 and indicate the site complies with the relevant criteria. The results are consistent with the predictions in the EIS.

Table 4.3 Bentley Quarry dust monitoring results

| Date | D1 g/m ² /month | D3 g/m ² /month | D4 g/m ² /month |
|----------------|----------------------------|----------------------------|----------------------------|
| Criteria | 2g/m ² /month | | |
| July 2024 | 0.140 | 0.255 | 0.260 |
| August 2024 | 0.3 | 0 | 0.9 |
| September 2024 | 0.405 | 0.177 | 0.488 |
| October 2024 | 1 | 0.9 | 1.3 |
| February 2025 | 1.6 | 0.52 | 0.47 |
| March 2025 | 0.11 | 0.52 | 1.2 |
| April 2025 | 0.13 | 0.56 | < 0.1 |
| June 2025 | 1.4 | 0.19 | < 0.1 |

4.3.3 Improvements and initiatives

Monitoring and mitigation measures identified in the Conditions of Consent, EPL and EMS will continue to be implemented. Monitoring at D2 will be established or suitable alternative location if landowner approval at D2 is not forthcoming.

4.4 Soil and water quality

4.4.1 Environmental management

Soil and water quality at Bentley Quarry are managed in accordance with the EMS, which outlines appropriate mitigation measures for soil, surface water and groundwater management.

The targets for soil and water management at Bentley Quarry are:

- Manage erosion associated with operational activities, in accordance with *Managing Urban Stormwater Soil and Construction – Volume 2e Mines and Quarries* (DECC,2008).
- No exceedances of the EPL discharge limits.

In order to meet these targets, R&S Contracting implements a range of mitigation measures and monitoring requirements as outlined in the EMS, which include:

- Daily weather monitoring.
- Daily rainfall monitoring.
- Weekly monitoring of erosion and sediment controls and following rain.
- Dirty water and clean water bunds/drains.
- Stabilising/revegetating disturbed areas as soon as possible.
- Spill kit checks monthly and following use.
- Groundwater monitoring.

4.4.2 Environmental performance

Most water has been managed on site, with only two offsite discharges within the reporting period. A summary of the results is provided in Table 4.4. As shown, the water was within the relevant criteria when discharged.

Table 4.4 Basin water quality

| Date | pH | TSS (mg/L) | Oil and grease |
|-----------------|----------------|------------|----------------|
| Criteria | 6.5-8.5 | 50 | Nil |
| 22/11/24 | 7.23 | 13 | Nil |
| 28/04/25 | NA | 8 | Nil |

Groundwater was not intercepted during the reporting period but the groundwater was sampled at GW1 on 13/11/2024. The results indicate the groundwater is relatively good quality but it is difficult to interpret without criteria or other results. Further assessment will be possible, as additional results become available.

Table 4.5 GW1 monitoring results

| Parameter | 13/11/2024 |
|-------------------------|------------|
| Depth (mbgl) | 6.75 |
| Chloride (mg/L) | 21 |
| Conductivity (uS/cm) | 540 |
| pH | 8.0 |
| Sulphate (mg/L) | <2 |
| Calcium (mg/L) | 44 |
| Magnesium (mg/L) | 16 |
| Potassium (mg/L) | 3.9 |
| Sodium (mg/L) | 92 |
| Total Alkalinity (mg/L) | 330 |

| Parameter | 13/11/2024 |
|-----------------|------------|
| Arsenic (mg/L) | <0.001 |
| Cadmium (mg/L) | <0.0002 |
| Chromium (mg/L) | <0.001 |
| Copper (mg/L) | 0.001 |
| Lead (mg/L) | <0.001 |
| Mercury (mg/L) | <0.0001 |
| Nickel (mg/L) | 0.002 |
| Zinc (mg/L) | 0.012 |

4.4.3 Improvements and initiatives

R&S Contracting will continue to implement the appropriate mitigation measures and monitoring required by the Conditions of Consent, EPL and EMS. The EMS requires the groundwater to be sampled quarterly, so this will be implemented in future.

4.5 Biodiversity and rehabilitation

4.5.1 Environmental management

Biodiversity and rehabilitation at Bentley Quarry is managed in accordance with the EMS and Conditions of Consent. The targets outlined in the EMS in relation to biodiversity and rehabilitation include:

- No fauna fatalities.
- No unapproved disturbance of vegetation.
- No new occurrences of weeds on site.

In order to meet these objectives, R&S Contracting implements a range of mitigation measures and monitoring requirements as outlined in the EMS, which include:

- Clearly marked the limits of clearing.
- Managing weeds.
- Using native species for revegetation.

4.5.2 Environmental performance

During the reporting period there have been no reported fauna fatalities, unapproved disturbance of vegetation or any new weeds on site.

4.5.3 Improvements and initiatives

R&S Contracting will continue to implement the EMS and Conditions of Consent requirements to minimise impacts on biodiversity. They will also commence the compensatory planting of the offset site.

4.6 Heritage

4.6.1 Environmental management

Management of both historical and Aboriginal cultural heritage at Bentley Quarry is in accordance with the EMS and Conditions of Consent. The targets outlined in the EMS in relation to heritage are:

- No damage to heritage items.
- All site staff and contractors trained on unexpected finds protocol.

4.6.2 Environmental performance

During the reporting period, R&S Contracting has followed the protocols outlined in the EMS. As predicted in the EIS, no unexpected finds of historical or Aboriginal heritage items have been recorded during the reporting period.

4.6.3 Improvements and initiatives

The EMS and Conditions of Consent will continue to be implemented at Bentley Quarry over the next reporting period.

4.7 Waste

4.7.1 Environmental management

Waste at Bentley Quarry is managed in accordance with the EMS, Conditions of Consent and EPL. The targets outlined in the EMS in relation to waste are:

- The volume of waste disposed at landfill is less than 1% of the volume extracted.
- No recyclable products disposed to landfill.
- No contamination of the quarry.

The EMS encouraged using the waste management hierarchy of avoid, reuse/recycle, and then dispose to mitigate the impacts of waste from a number of sources, including excavated material, green waste, general construction waste, contaminated soil, liquid waste, wastewater, biological waste, and domestic waste.

The following mitigation measures were implemented by R&S Contracting during the reporting period to manage waste on-site:

- Re-using excess materials.
- Recycling metal, waste oil and old batteries.
- Appropriate storage of chemicals and fuels in bunded areas with 110% capacity.
- Diverting clean water from the site.
- Routine weekly inspection to ensure the site is clean and tidy.

4.7.2 Environmental performance

Waste metal was recycled and other waste is stored in a skip bin that is collected by Richmond Waste every second month and disposed at a licenced facility. No waste was imported during the reporting period.

4.7.3 Improvements and initiatives

R&S Contracting will continue to implement the waste mitigation measures and conditions outlined in the EMS, Conditions of Consent and EPL.

4.8 Traffic

4.8.1 Environmental management

Traffic at Bentley Quarry is managed in accordance with the EMS and Conditions of Consent. The targets of the EMS in relation to traffic are:

- Ensure full compliance with the relevant legislative requirements and CoA.
- No justified complaints related to site traffic.
- No road damage from quarry vehicle movements beyond normal wear and tear.

In order to meet these objectives R&S Contracting implemented the following mitigation measures during the reporting period:

- Implementation of the driver's code of conduct.
- No more than 70 laden trucks dispatched from the quarry on any day and no more than 7 in an hour.
- Restricted trucks leaving the site between 8:00 – 9:00 am and 3:00 – 4:00 pm each day.

4.8.2 Environmental performance

Due to issues with the weighbridge, truck movement records are not available, however, Bentley Quarry reports that the maximum number of trucks was less than the limit of 70 per day and 7 per hour. Most days are well below the maximum limit, so the impacts from traffic associated with the quarry are likely to be a lot less than predicted in the EIS.

Some trucks have entered the site during the restricted hours of between 8:00 – 9:00 am and 3:00 – 4:00 pm each day. However, Bentley Quarry does not allow any trucks to leave site during the restricted times. Bentley Quarry report that it is difficult to control trucks entering the site for a full hour and once they arrive it's considered safer to have them enter, rather than park on the side of the road, potentially causing a hazard for other motorists.

Nevertheless, Bentley Quarry will continue to apply the Driver's Code of Conduct to limit the trucks entering the site.

4.8.3 Improvements and initiatives

R&S Contracting will continue to implement the traffic mitigation measures and conditions outlined in the EMS and Conditions of Consent. Monitoring truck numbers and times will also be improved, so compliance with the Conditions of Consent can be demonstrated.

It is also proposed to modify the restricted hours, so it's more practical.

5. Community

In accordance with Condition No. 107, two Community Consultative Advisory Committee meetings were held on 13 November 2024 and 19 June 2025. This provided the community and Council an opportunity to inform R&S Contracting of any issues and for R&S Contracting to provide an update on the quarry operations and monitoring. A copy of the presentation provided at the meetings and the minutes are provided in Appendix A.

The EMS included details of a complaints handling process for the quarry. In accordance with the EMS, a complaints telephone line was established, with the number advertised on the Bentley Quarry entrance and on the Bentley Quarry website. The EMS requires all records of complaints to include:

- The date and time of the complaint.
- The method by which the complaint was made.
- Any personal details of the complainant or, if no such details were provided, a note to that effect.
- The nature of the complaint.
- The action taken in relation to the complaint, including any follow-up contact with the complainant.
- If no action was taken, the reason why no action was taken.

Bentley Quarry records all complaints regarding quarry operations, in accordance with the EMS. The complaints will be publicly available on their website.

The only complaints received to date are abusive and not considered to be valid, so they have not been responded to. A copy of the complaints is provided in Appendix B.

6. Incidents and non-compliance

6.1 Incidents

No incidents were recorded during the reporting period.

6.2 Non-compliance

No non-compliances with the performance measures/criteria were identified in the monitoring data for the reporting period. The exception is the trucks entering the site during the restricted hours and the missing truck records, as detailed in Section 4.8. Groundwater monitoring is also required to be undertaken quarterly.

The independent audit, in accordance with Condition 103 was not completed within 12 months of the consent. This has since been completed.

6.3 Regulatory agency actions

Council inspected the site and issued a letter dated 26/09/2024 with some issues that were identified. A response dated 28/10/2024 was provided to the issues raised. No further action was taken by Council.

There has been no other regulatory agency action during the reporting period.

7. Activities to be completed in the next reporting period

In the next 12 months, activities at the quarry are anticipated to include:

- Continued extraction with an estimated extraction volume of 100,000 tonnes.
- Commencement of rehabilitation of the offset area.
- Modify the hours trucks are restricted operate.
- General operations and monitoring in accordance with the EMS, Conditions of Consent and EPL.

8. Conclusion

This Annual Review has been completed for Bentley Quarry, on behalf of R&S Contracting, in accordance with DA2022/0107 Condition of Consent No. 102, to assess environmental compliance at the site for the 2024/25 financial year which is the reporting period.

The primary quarry operations undertaken during the reporting period included:

- Holding Community Consultative Advisory Committee meetings on:
 - 13 November 2024
 - 19 June 2025
- Blast undertaken February 2025
- Environmental management
- Noise compliance monitoring
- Obtained consent for a modification to the staging from 4 stages to 2 on the 21 November 2024

Activities proposed for the next reporting period include:

- Continue extraction with an estimated extraction volume of 100,000 tonnes
- Commencement of rehabilitation of the offset area
- Modify the hours trucks are restricted operate
- General operations and monitoring

An assessment of the environmental monitoring completed at Bentley Quarry was undertaken, with compliance against EMS, Conditions of Consent and EPL. Generally, environmental management at Bentley Quarry, during the reporting period, was as predicted and compliant. The exceptions were trucks entering the site during the restricted times, truck monitoring, groundwater monitoring and the independent environmental audit not being completed.

No valid complaints were received during the reporting period.

Environmental management will continue to comply with the EMS, Conditions of Consent and EPL.

Appendices

Appendix A

**Consultative Committee Presentation
and Minutes**

Community Consultative Advisory Group Meeting

Community Consultative Advisory Group Meeting (Bentley Quarry)

Held on: 13/11/2024 – 3pm to 4pm

At: Bentley Quarry - 1465 Bentley Road, Bentley NSW 2480

Chaired by: Luke Meadows

Attended

Frank Clarence Hathaway (Community representative), Rob Mckenzie (R & S Contracting – Quarry owner), Steve Leadbetter (R & S Contracting – Employee) Ben Luffman (GHD), Holly Lammers (ENV Solutions), Luke Meadows (ENV Solutions)

Apologies

-

Declarations of interest

No pecuniary or non-pecuniary interest were indicated

Agenda

| Agenda |
|--|
| Welcome to country |
| Declarations of Interest |
| Introductions of meeting members |
| Role of the community |
| Summary of activities and monitoring at the quarry |
| Community issues |
| Close out |
| Next meeting |

Community Consultative Advisory Group Meeting

Meeting Minuets

Welcome to country:

Luke Meadows acknowledges the Bundjalung people of the local Casino area.

Declarations of Interest:

Frank Clarence Hathaway (Community representative) signs wavier indicating no pecuniary or non-pecuniary interest in the quarry.

Introductions of meeting members:

Frank Clarence Hathaway: Frank is acting on behalf of the community group. Frank lives and works in the local area.

Rob Mckenzie: Rob is the owner of the quarry and operates the quarry under R & S Contracting. Rob also resides on the land the quarry operates on.

Ben Luffman: Ben of GHD acting on behalf of R & S contracting responsible for managing the environmental approvals for the quarry.

Holly Lammers: Holly is an occupational hygiene consultant working for ENV Solutions in Ballina. Holly is witnessing the meeting to gain experience in community consultative committees.

Luke Meadows: Luke is an environmental scientist and occupational hygienist working for ENV Solutions in Ballina. Luke is acting as the independent chair for this community advisor meeting.

Role of the community:

Frank Clarence Hathaway is acting on behalf of the community. Frank lives in the local area and is favour of the quarry operations currently. Frank indicates he actively discusses the quarry with other community members in day-to-day life and the general consensus is that most people are in favour of current operations at the quarry, with a small number of people unhappy.

Summary of activities and monitoring at the quarry:

Ben Luffman (GHD) gives a verbal presentation and hands out summary of recent activities document outlining the following:

- Recent activities
- Approximately 400 tonnes of concrete waste has been received at the site
- Regular noise and dust monitoring at the quarry hasn't indicated any exceedances
- No water monitoring currently as water has not been discharged at the quarry so not required
- A number of complaints have been received from the community, this is outlined in Ben (GHD) document
- On average 25-30 truck movements at the quarry during working days
- Request for truck movement time to be modified. Currently 1hr morning/afternoon. Request to be reduced to 15 mins morning/afternoon. Pending approval with regulators.
- A blast is planned for early 2025.

Community Consultative Advisory Group Meeting

Community Issues:

Frank Clarence Hathaway indicates from his perspective most people are generally happy with the quarry, however, is a small group of people who are disgruntled. Frank lives on the adjacent property and does not have any issues with the current operations at the quarry.

Close out:

Meeting finishes at approximately 15:30.

All attendees discuss next meeting date and location.

Rob Mckenzie (R & S Contracting – Quarry owner) suggests re-hosting the next meeting at the quarry.

All attendees agree that this is a good option.

All attendees agree next meeting late March – April 2025.

Upcoming meetings

March / April 2025

Community Consultative Advisory Group Meeting

Community Consultative Advisory Group Meeting (Bentley Quarry)

Held on: 19/06/2025 – 3:30pm to 4pm

At: Bentley Quarry - 1465 Bentley Road, Bentley NSW 2480

Chaired by: Luke Meadows

Attended

Not in attendance (Community representative), Rob Mckenzie (R & S Contracting – Quarry owner), Jarrod Hellya (R & S Contracting) Andy Edwards (Richmond Valley Council), Luke Meadows (ENV Solutions),

Apologies

Community representative

Declarations of interest

No pecuniary or non-pecuniary interest were indicated

Agenda

| Agenda |
|--|
| Welcome to country |
| Declarations of Interest |
| Introductions of meeting members |
| Role of the community |
| Summary of activities and monitoring at the quarry |
| Community issues |
| Close out |
| Next meeting |

Community Consultative Advisory Group Meeting

Meeting Minuets

Welcome to country:

Luke Meadows acknowledges the Bundjalung people of the local Casino area.

Declarations of Interest:

Andy Edwards (Richmond Valley Council), signs wavier indicating no pecuniary or non-pecuniary interest in the quarry.

Introductions of meeting members:

Rob Mckenzie: Rob is the owner of the quarry and operates the quarry under R & S Contracting. Rob also resides on the land the quarry operates on.

Luke Meadows: Luke is an environmental scientist and occupational hygienist working for ENV Solutions in Ballina. Luke is acting as the independent chair for this community advisor meeting.

Andy Edwards (Richmond Valley Council) is a council assessment officer at Richmond Valley Council.

Jarrod Hellya (R & S Contracting) is an employee of R & S Contracting working across the quarry's administration and sales area.

Role of the community:

Not in attendance

Summary of activities and monitoring at the quarry:

Luke Meadows (ENV Solutions) gives verbal presentation and hands out summary of recent activities document outlining the following:

- Recent activities
- Slower start to the year dictated by weather conditions
- Blast 20,000t in February, blast complied with the criteria
- Approximately 25-30 truck movements per day
- Accepted approximately 2000m³ of waste concrete
- Regular noise and dust monitoring at the quarry hasn't indicated any exceedances
- No water monitoring currently as water has not been discharged at the quarry so not required
- Update to the current modification including submission of detailed traffic assessment to support proposed new modification. Modification to be put to public exhibition and determined by the planning panel.
- Another blast planned before end of year.
- Continued planned environmental monitoring and annual report also proposed.
- Rob Mckenzie (R & S Contracting – Quarry owner) enquires if these meetings need to continue as lack of interest from community and significant financial cost to the quarry.

Community Consultative Advisory Group Meeting

Community Issues:

Summary of complaints discussed by Luke Meadows (ENV Solutions). Complaints included the following:

| Date | Complaint | Response |
|------------|--|---|
| 5/12/2024 | This is advertised as the complaints number. Your obscene noise is not acceptable, but, hey, what do you expect from you? | Due to nature of complaints a response was not considered necessary |
| 6/12/2024 | Once your noise levels are unacceptable. This is another complain about your excessive noise. Just typical behaviour of an uneducated bogan | |
| 28/01/2025 | Another noise complaint addressing your totally unacceptable noise levels. Keep your f...g noise to your scum self, you piece of dog shit! We are sick and f...king tired of hearing it. Just shows what sort of absolute scum you and your family are. Trash! | |
| 27/05/2025 | Another noise compliant! Shut your fucking noise up you mongrel cunt | |

- No further issues received from the community.

Close out:

Meeting finishes at approximately 16:15.

All attendees discuss next meeting date and location.

Rob Mckenzie (R & S Contracting – Quarry owner) suggests re-hosting the next meeting at the quarry.

All attendees agree that this is a good option.

All attendees agree next meeting late November – December 2025.

Upcoming meetings

November / December 2025

Appendix B

Complaints

Table B.1 *Abusive text messages*

| Date | Complaint |
|------------|--|
| 29/10/2024 | Another f.....g complaint! Shut your f...g noise up arsehole. Only the lowest of shit dies what you do and karma will come. Another compliant of the EPA and the general manager. I've just had it confirmed that this is the complaints line for your stinking quarry. Your noise is u acceptable and needs to stop. If you want a ware then you will certainly ly get one! |
| 30/10/2024 | Another complaint! Shut the f...k up, arsehole. Once again your racket is way beyond acceptable. |
| 12/11/2024 | Another noise complaint! Your noise is not acceptable under any circumstances and will be reported. Only the worse kind of scum turns what was once an idealic valley into something from hell. Just shows how low you and your family actually are! Absolute trash! |
| 5/12/2024 | This is advertised as the compliants number. Your obscene noise is not acceptable, but, hey, what do you expect from you? |
| 16/12/2024 | Once your noise levels are unacceptable. This is another complain about your excessive noise. Just typical behaviour of an uneducated bogan |
| 28/01/2025 | Another noise complaint addressing your totally unacceptable noise levels. Keep your f...g noise to your scum self, you piece of dog shit! We are sick and f...king tired of hearing it. Just shows what sort of absolute scum you and your family are. Trash! |
| 27/05/2025 | Another noise compliant! Shut your fucking noise up you mongrel cunt |



ghd.com

→ **The Power of Commitment**